

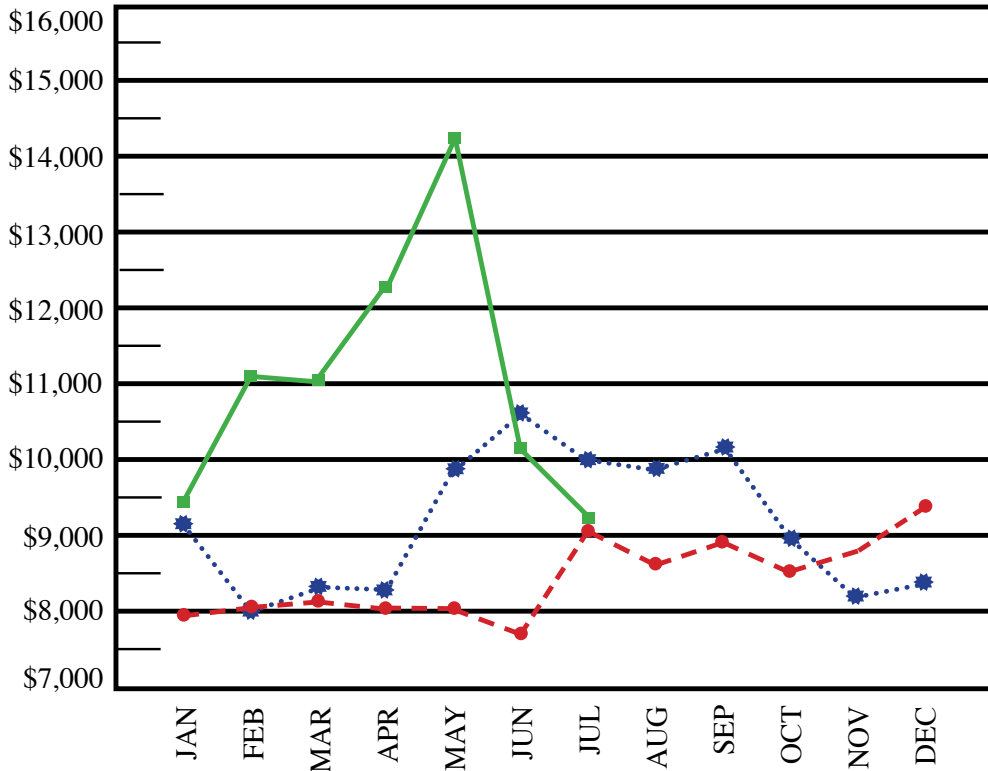


Monthly Cost Index for Framing Material

Approximately 2000 square foot house



July 2, 2010



Includes:

- All Studs**
- Dimensional Lumber**
- Plywood**
- Subject to various framing techniques**

Material Package Contents:

- A) Chart & graph represent slab construction
- B) 2x4 Spruce Studs (8, 9 & 10 ft.), Spruce plates and bracing
 1. 8' used in Master Bedroom, Bedroom 2 and Garage
 2. 9' used in Dining, Kitchen & Bedroom
 3. 10' used in Foyer and Living Room
- C) Spruce and Yellow Pine rafters, Yellow Pine headers and joists
- D) 7/16" Wafer board Decking
- E) 7/16" Wafer board used to wrap house

Areas That Affect The Cost Of Building Materials

- Housing starts & permits monthly
- New and existing home sales
- Weather and natural disasters
- Interest rates
- Lumber and panel production
- Government regulation and duties
- Freight charges - oil/gas

	JAN 8	FEB 5	MAR 5	APR 2	MAY 7	JUN 4	JUL 2	AUG. 6	SEP 3	OCT 1	NOV 5	DEC 3
2010	9,411	11,131	11,072	12,361	14,248	10,126	9,223	8,671	8,969	8,536	8,804	9,312
2009	7,974	8,069	8,145	8,083	8,090	7,756	9,044	8,671	8,969	8,536	8,804	9,312
2008	9,153	8,037	8,474	8,350	9,902	10,756	10,021	9,989	10,224	9,048	8,220	8,517

Package Price Per Square Feet (Based on Slab Construction)

	JAN	FEB	MAR	APR	MAY 7	JUN	JUL	AUG	SEP	OCT	NOV	DEC
2010	4.71	5.57	5.54	6.18	7.12	5.06	4.61					
2009	3.99	4.03	4.07	4.04	4.05	3.88	4.52	4.34	4.48	4.27	4.40	4.66
2008	4.58	4.02	4.24	4.18	4.95	5.38	5.01	4.99	5.11	4.52	4.11	4.26

For Optional Crawl Space And Wood Floor Construction, Add: (Not included in package price)

	JAN	FEB	MAR	APR	MAY 7	JUN	JUL	AUG	SEP	OCT	NOV	DEC
2010	3,584	4,171	4,342	4,457	5,389	3,968	3,484.28					
2009	3,588	3,414	3,521	3,614	3,732	3,517	3,824	3,583	3,453	3,231	3,440	3,434
2008	3,565	3,190	3,212	3,125	3,960	4,064	3,706	3,615	3,551	3,462	3,245	3,769

Based on 2 x 10, 2 x 12, and 3/4" LP T&G OSB Topnotch

Notice to our Builder Customers: This report is being produced to aid and assist you with your cost controls. It will show comparison with your past pricing and current market trends.

